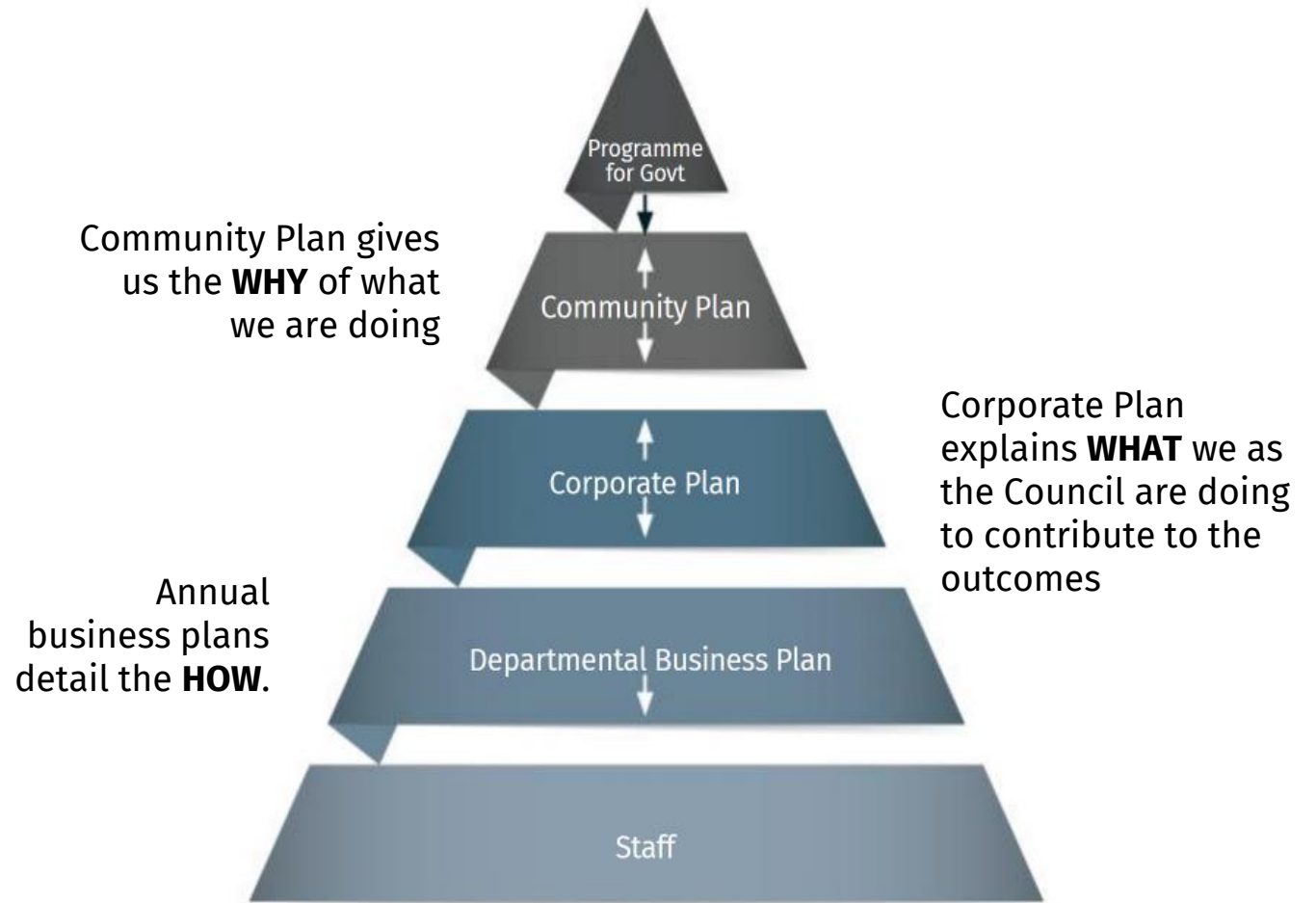




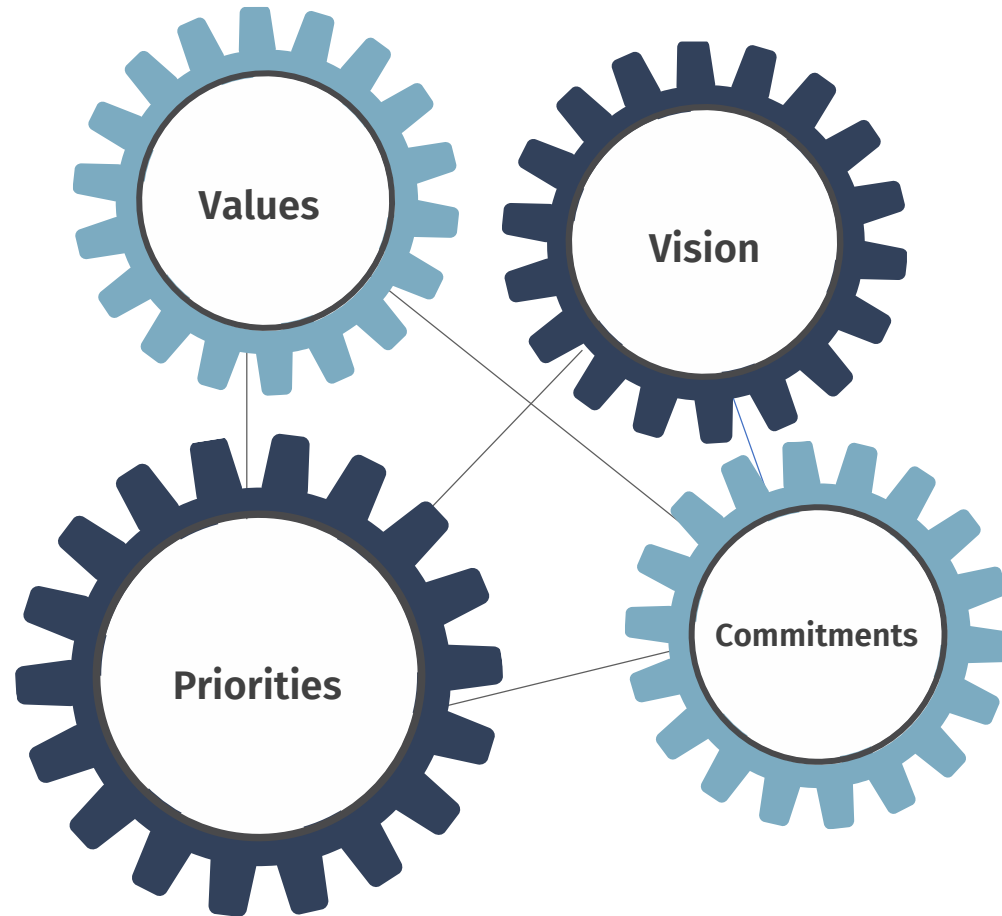
SUMMARY OF THE DRAFT CORPORATE PLAN 2023-27

Armagh City, Banbridge & Craigavon Borough Council

WHAT IS A CORPORATE PLAN?



FEATURES OF OUR CORPORATE PLAN ?





OUR COMMUNITY PLAN VISION

It is our vision that we will create

“ A happy, healthy and connected community, a vibrant and sustainable economy and appealing places for living, working and learning ”

STRAPLINE



PEOPLE



PLACE



FUTURE

Our People, Our Place, Our Future

OUR 3 VALUES



PEOPLE CENTRED

Inclusive and welcoming, a place where **people and staff are valued. Engage positively** in partnership working, **empowering others** to achieve success.

LEADERS

Be positive, inspiring and **serve passionately** to achieve our aspirations. Demonstrate **resilience, respect and adaptability**.

RESPONSIBLE

Respect, protect and **enhance** our place. **Accountable** in how we manage our resources and decisions. **Open** and **transparent** in our processes, **consistently deliver** our services effectively and obtain **value for money**.

OUR 5 PRIORITIES



WHY 'ENVIRONMENT AND PLACE' IS A PRIORITY FOR US

The environment plays a critical role in sustainably planning for the future, it underpins the wellbeing of societies, economies and ecosystems.

We recognise that place shaping improves the social, economic, environmental and cultural wellbeing of the place, ensuring aspirations of the community are being realised and included in the process.

OUR COMMITMENTS UNDER ENVIRONMENT AND PLACE

- Actively respond to the climate crisis and support others to do likewise
- Seek investment to preserve the uniqueness of our heritage and places
- Shape our places to be attractive, accessible, healthy, safe and clean

WHY 'COMMUNITY WELLBEING' IS A PRIORITY FOR US

Council is committed to supporting local communities, in collaboration with our partners and through active engagement with local citizens.

It is our focus that people feel respected, included, safe and supported and that our Borough is a welcoming place.

OUR COMMITMENTS UNDER COMMUNITY WELLBEING

- Encourage participation in arts and culture
- Provide opportunities which improve quality of life and wellbeing for our communities and staff
- Support and empower communities

WHY 'ECONOMIC GROWTH' IS A PRIORITY FOR US

Our Borough is home to some of Northern Ireland's most successful and largest employers. Our industries are vibrant and wide ranging with a strong drive for innovation, quality and service delivery.

As we move forward sustainability, productivity and connectivity must be our cornerstone for economic growth.

ECONOMIC GROWTH

- Maximise the potential of our Mid South West (MSW) Growth Deal and Regional Economic Strategy
- Provide opportunities for growth, investment and skills development in our local economy
- Seek investment in infrastructure and connectivity

WHY 'SERVICE DELIVERY' IS A PRIORITY FOR US

Our journey towards excellence has always been guided by a commitment to meet and exceed the expectations of our residents, customers and visitors.

It is where our values are put into action.

SERVICE DELIVERY

- Continuously review to improve our services
- Monitor and communicate our performance
- Seek and use regular customer engagement and feedback

WHY 'STAFF, LEADERSHIP AND RESOURCES' IS A PRIORITY FOR US

As an employer of 1204 staff, we recognise how valuable our staff are to the organisation and overall success of the Council and Borough.

Our staff are the people who will bring our vision to life and live out our values in the delivery of our commitments.

We have 41 Elected Members, who represent the local communities within the Borough.

STAFF, LEADERSHIP AND RESOURCES

- Value staff and be civic leaders
- Communicate and engage with staff, communities and others
- Strengthen our governance and review efficiency of our resources and assets

FURTHER INFORMATION

Draft Corporate Plan can be viewed in the related documents section of the survey.

For further information please contact a member of the **Community Planning team**.

✉ communityplanning@armaghbanbridgecraigavon.gov.uk

☎ 0300 0300 900