

# TIER TWO TOWNS PROJECT- TANDRAGEE



## Landscape proposals for a new Community Open space at the junction of Mill Street and Markethill Road

### PROJECT BACKGROUND:

GM Design Associates Limited have been appointed by Armagh City, Banbridge and Craigavon Borough Council to develop Environmental Improvement Plans for Tandragee, as part of the Tier Two Towns project.

The initial Public Consultation for this project was carried out in February 2020 and this highlighted some key issues including:

- The importance of creating a Community Open Space in the lower end of the Town.
- A need to celebrate the history of Tandragee and to develop on the 'sense of place'
- The need for more tree and shrub planting within the Town

### THE PROPOSALS:

The proposals look to develop this under used space to create a Gateway Feature and Community Space. The theme and form of the two circular spaces are based on the Historic Mill Wheels of Tandragee and the natural form of the paths represents the water flowing through the Mill Wheels.

Each of the two circular spaces would include bespoke paving features with one space detailed to show the old history of the Tandragee Mills with the other space being detailed to show the modern day history of the Mills.

These spaces will also include curved timber seating and interpretation panels. Feature Lighting will form the backdrop to these spaces. The larger of the two spaces could be big enough to host certain community events.

The proposals also make the best use of existing site features- e.g. retaining the trees, links to existing paths and existing tree lines, revitalising existing planting beds and re-use of existing seating. The main path will feature occasional bespoke paving units on the surface with references to the timeline/ historical development of the mills between the two spaces.

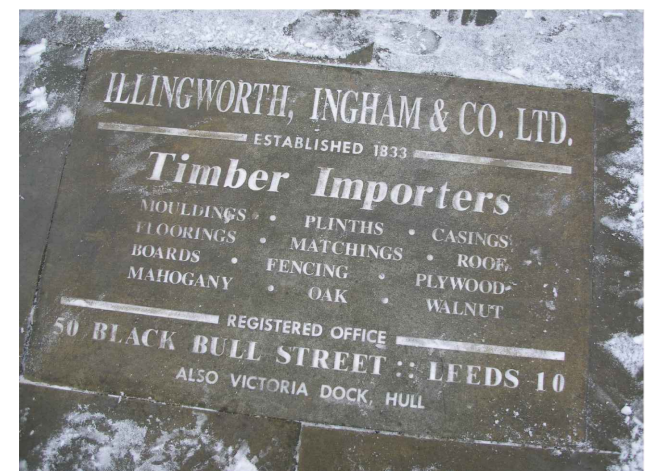
### CONCEPT IMAGES

These images are included to help convey the design aspirations for this project:

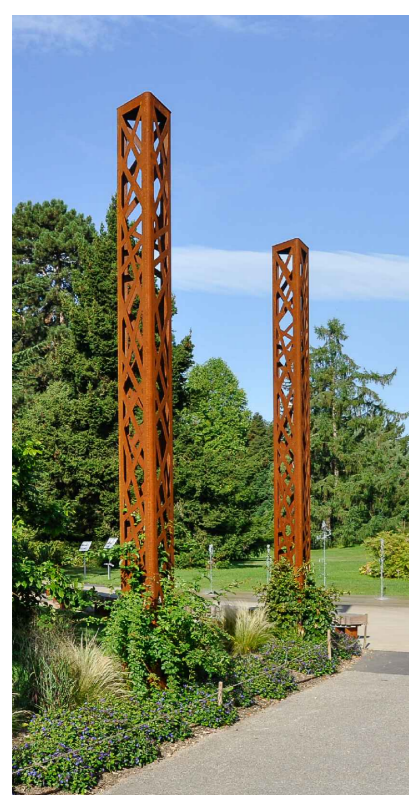


THE FORM OF THE COMMUNITY SPACES WOULD BE BASED ON THE SHAPE OF MILL WHEELS AND THE PATHS WOULD REPRESENT WATER FLOWING THROUGH THE MILL WHEELS

THE SPACES WOULD FEATURE NEW CURVING TIMBER SEATING



BESPOKE FEATURE PAVING WOULD FEATURE ALONG THE PATHS AND WITHIN THE SEATING AREAS. THESE FEATURE PAVING UNITS WOULD TELL THE STORY OF TANDRAGEE'S MILL HISTORY AND COULD INCLUDE HISTORICAL PHOTOS, NEWSPAPER ARTICLES AND QUOTES ETCHED INTO THE PAVING UNITS



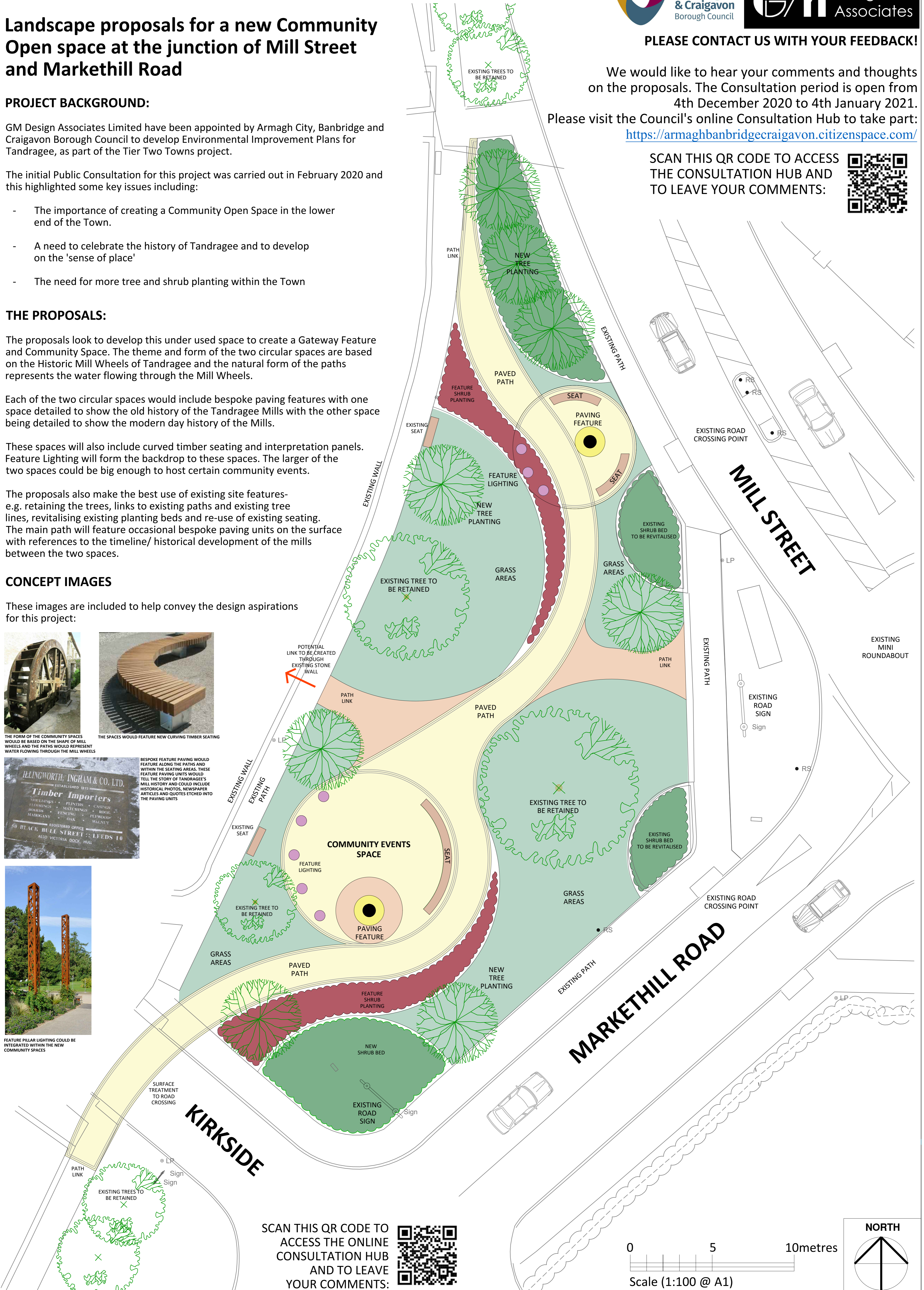
FEATURE PILLAR LIGHTING COULD BE INTEGRATED WITHIN THE NEW COMMUNITY SPACES

PLEASE CONTACT US WITH YOUR FEEDBACK!

We would like to hear your comments and thoughts on the proposals. The Consultation period is open from 4th December 2020 to 4th January 2021.

Please visit the Council's online Consultation Hub to take part: <https://armaghbanbridgecraigavon.citizenspace.com/>

SCAN THIS QR CODE TO ACCESS THE CONSULTATION HUB AND TO LEAVE YOUR COMMENTS:



SCAN THIS QR CODE TO ACCESS THE ONLINE CONSULTATION HUB AND TO LEAVE YOUR COMMENTS:

