

TIER TWO TOWNS PROJECT- WARINGSTOWN

Landscape proposals for a the development of Public Realm proposals and new civic spaces at the junction of Main Street, Mill Hill and Banbridge Road

PLEASE CONTACT US WITH YOUR FEEDBACK!

We would like to hear your comments and thoughts on the proposals. The Consultation period is open from **5th February 2021 to 12th February 2021**. Please visit the Council's online Consultation Hub to take part:

<https://armaghbanbridgecraigavon.citizenspace.com/>

SCAN THIS QR CODE TO ACCESS THE ONLINE CONSULTATION HUB AND TO LEAVE YOUR COMMENTS



PROJECT BACKGROUND:

GM Design Associates Limited has been appointed by Armagh City, Banbridge and Craigavon Borough Council to develop Environmental Improvement Plans for Waringstown, as part of the Tier Two Towns project.

The initial Consultation for this project was carried out in February 2020 and this highlighted some key issues including:

- The importance of creating a Town Centre space
- A need to celebrate the history of Waringstown and to develop on the 'sense of place'
- The need for more tree and shrub planting and improved lighting
- The potential to create a Heritage Walking Trail

THE PROPOSALS:

This design focusses on the creation of a 'hub' area to the Public Realm works and to create a focus for the town, a gateway feature and a civic space. These proposals also look at the creation of a 'Weaver's Trail' for Waringstown.

The theme of the design is based on the Weaving History of Waringstown and the layout and shapes of the feature elements are based on the weaving spindles and the threads of material running between the spindles. The paving surrounding these feature elements would be a warm blend of colours selected to complement the surrounding built environment.

This 'hub' area would also feature new street tree planting, new lighting, new seating provision and revitalised planting beds.

Please note that we have held discussions with Department for Infrastructure (Roads) regarding the feasibility of incorporating traffic calming measures at this junction. They have noted that this will not be feasible as this is a Class A road and DfI Roads have a policy not to include traffic calming measures to this Class of road.

We will also be working closely with DfI (Street Lighting) to look at proposals to improve the street lighting within this area

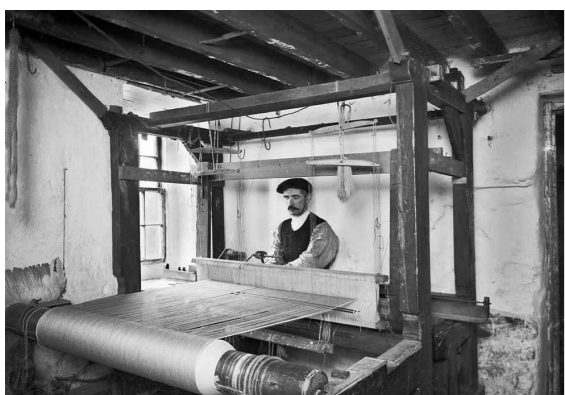
The proposals also look to utilise an area of the existing car park at the Mace. This would allow for the creation of a Community Space that could be used for a variety of events. The final proposals for this area are subject to agreement with the landowners.

The 'Weaver's Trail' would be the creation of the start of a Heritage walking trail. The trail would naturally be based on the Weaving Heritage of Waringstown. The Trail could include surface mounted plaques/feature paved units and interpretation panels. The potential location for 'Weaver's Trail' features have been indicated on the drawing, with the circle features, and would also be dotted along the radiating streets at key locations.

Please note all proposals are subject to funding and Statutory Authority approvals.

CONCEPT IMAGES

These images are included to help convey the design aspirations for this project:



THE FORM OF THE PAVING DESIGN IS REPRESENTATIVE OF THE HISTORIC WEAVING SPINDLES AND THE THREADS RUNNING BETWEEN THEM



NEW STREET TREE PLANTING SPECIES WILL BE SELECTED WITH STRONG AUTUMNAL COLOUR. PLEASE NOTE THAT ALL PROPOSED TREES WILL HAVE CLEAR STEMS/TRUNKS UP TO 2 METRES ABOVE GROUND LEVEL- TO ENSURE THAT SIGHT-LINES ARE KEPT CLEAR



BESPOKE ETCHED PAVING WILL BE USED TO DRAW ELEMENTS OF WARINGSTOWN HISTORY OUT IN THE PAVING AND PUBLIC REALM AREAS



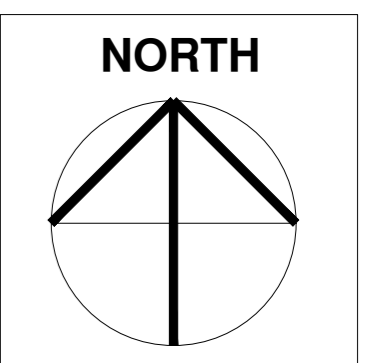
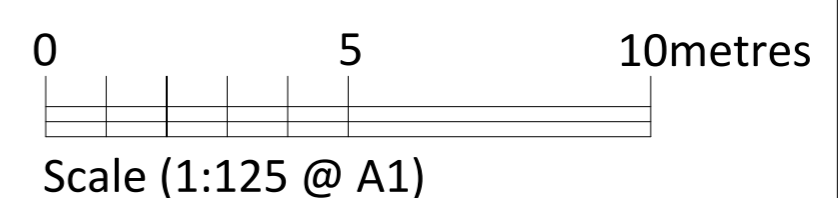
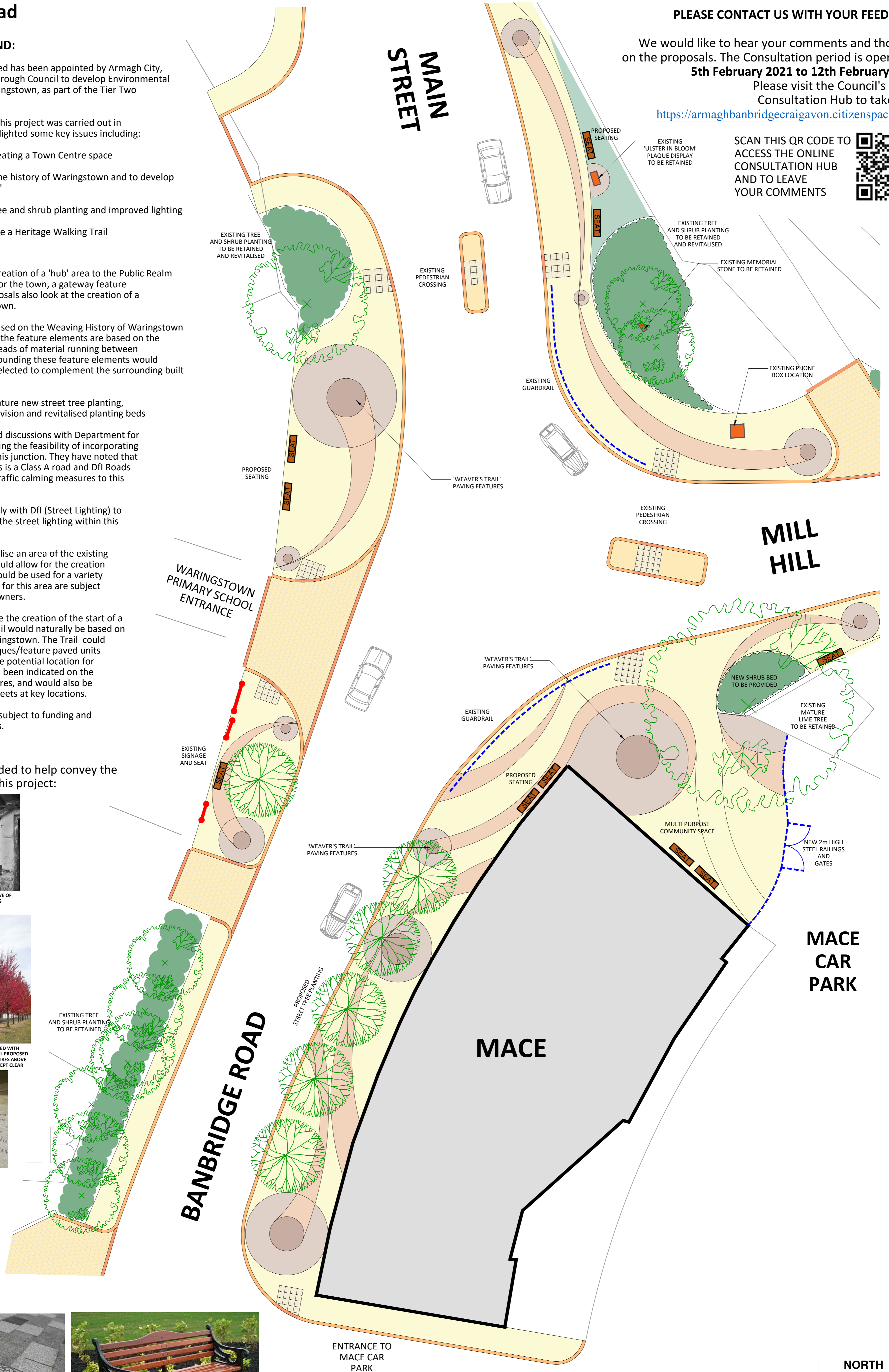
HERITAGE STYLE LED STREET LIGHTING IS TO BE USED (SUBJECT TO AGREEMENT WITH DfI-STREET LIGHTING)



LASER ETCHED PAVING PATTERNS COULD BE USED TO REPRESENT HISTORICAL WEAVING PATTERNS OF WARINGSTOWN



TRADITIONAL STYLE SEATING IS TO BE USED. POWDER COATED STEEL HORIZONTAL BARS WILL BE USED INSTEAD OF TIMBER TO HELP REDUCE MAINTENANCE REQUIREMENTS.



Updated Consultation Board-
February 2021