

Illustrative image of proposed treatment and enhancement measures to Downshire Linkage - incorporating new planting, seating and public realm space



Illustrative image of proposed raised planters with integrated seating and trees in Railway Street Linkage

LEGEND

- Site location boundary
- Listed Buildings and structures
- Existing street trees retained
- New tree planting within tree pits.
- New tree planting in raised planters.
- New amenity shrub planting
- Large unit natural stone paving
- Medium unit natural stone paving in contrasting colour.
- Asphalt surfaced footpaths with natural stone units
- Tactile paving (Buff) to uncontrolled pedestrian crossings
- Tactile paving (Red) to controlled pedestrian crossings
- Proposed locations for new street furniture

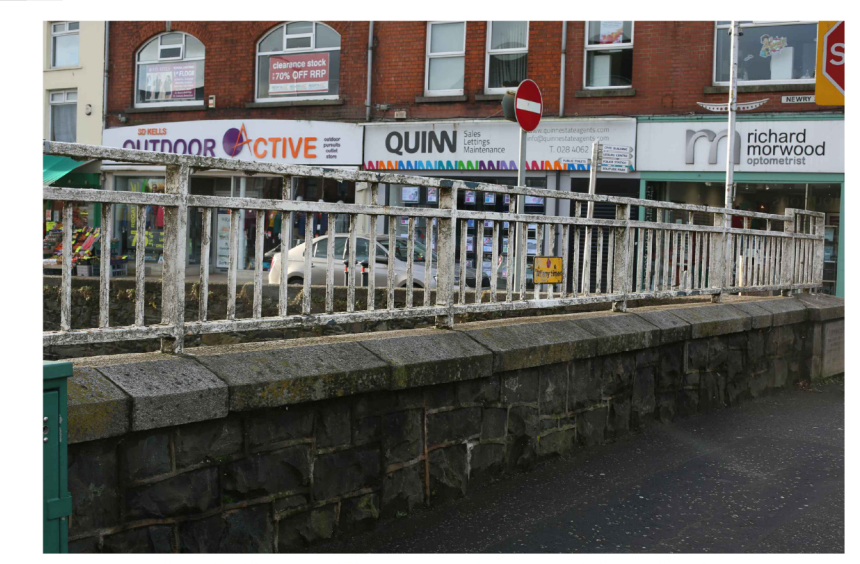


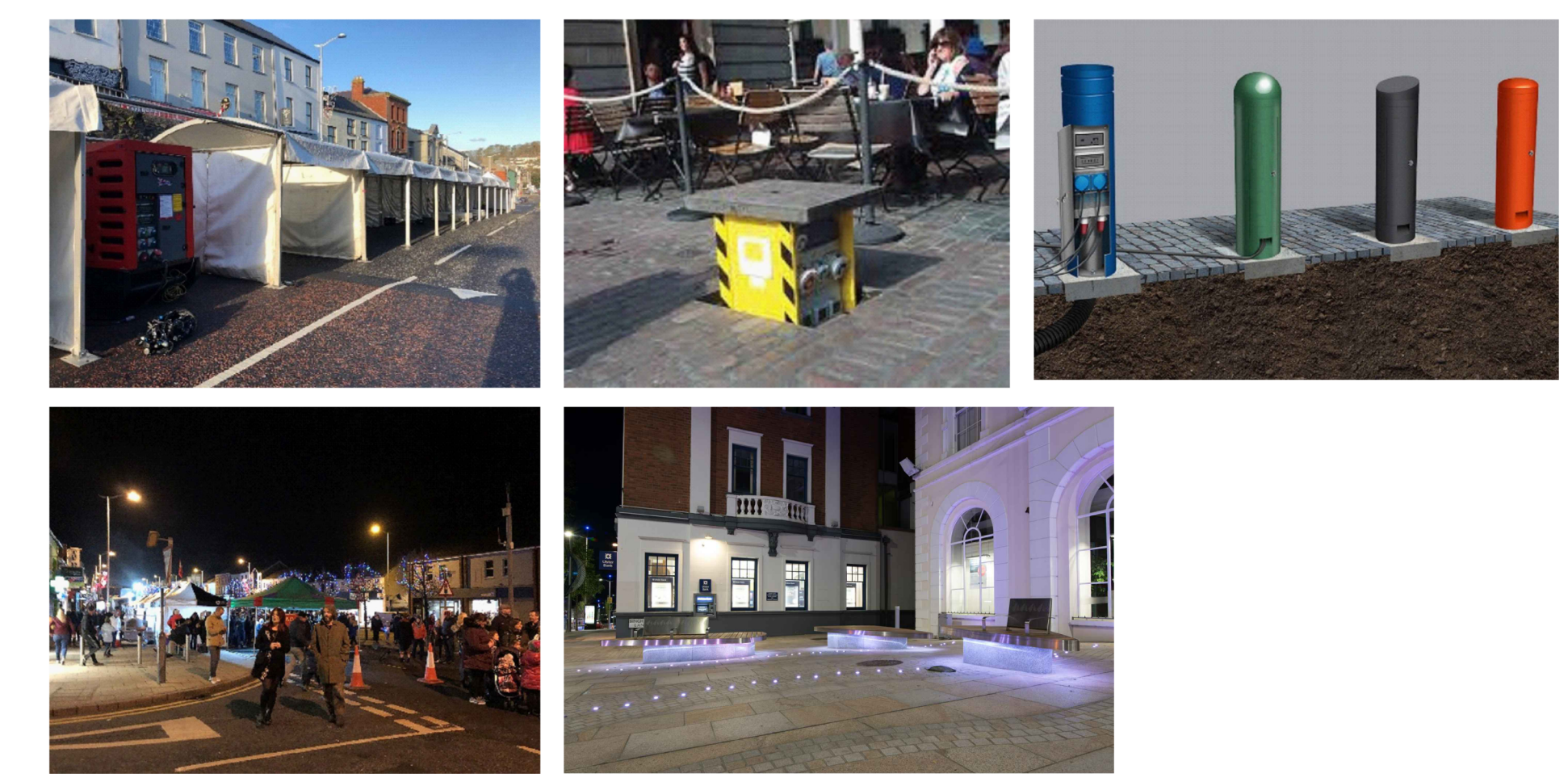
Image of existing railings on Downshire Bridge



Illustrative image of text etched into paved surface. Text on Downshire Bridge to reference local poetry / written reference



Artists impression illustrating widening of footpath, reinstatement of kerb and new railings to top of Downshire Bridge.



Illustrative images of proposed enlivenment to The Cuts and Downshire Bridge area to provide town centre event space. Interventions may include pop-up power supplies within street furniture (bollards) or as buried elements (pop-up). Existing public realm to be resurfaced in natural stone with up-lighters, feature lighting columns and new railings to top of Downshire Bridge. Paving to include etchings and details reflecting the history of the Downshire Bridge.